

TRU-LEVEL™ Standard Hydraulic Dock Leveller

Description

TRU-LEVEL™ Standard Dock Leveller

Webpage

<http://www.tru-bilt.co.nz/tru-dock/#tru-level-dl>

Product Information

The **TRU-LEVEL™** system is a hydraulic dock leveller for a variety of loading configurations and requirements. A high-quality, low-maintenance dock levelling system, **TRU-LEVEL™** Dock Leveller is designed to operate with the widest possible range of truck designs. Extremely durable with push-button ease-of-use, the **TRU-LEVEL™** system is designed to speed loading, protect personnel and increase productivity.

TL2515

TRU-LEVEL™ Hydraulic Dock Leveller

- Pit Size: 2500mm long, 2240mm wide, 550mm deep.
- Capacity: 11,000kg when bridged.
- Built to conform with CE European Certification EN1398.
- Working Range: 300mm above & below dock.
- Full toe guards.
- Three-piece front lip for narrow or off-centre trucks.
- High tensile lip. Protrudes 410mm from dock face.
- Three phase, 400V, 10A supply. Push button included.
- Two rubber bumpers included.
- Approx 850kg, 3.1m³



TL2515-PS

Pit Steel for TL2515 Dock Leveller

- Galvanised. Bolt together and set in concrete by builder.

TL2515-DF

Dock Frame for TL2515 Dock Leveller

- Overall Size: 2500mm long x 3500mm wide.
- Dock Height: 1000mm - 1500mm.
- Weld assembly on site.
- Galvanised.



TL3015

TRU-LEVEL™ Hydraulic Dock Leveller

** A longer leveller means less incline when the truck is different height to dock*

- Pit Size: 3000mm long, 2240mm wide, 550mm deep.
- Capacity: 11,000kg when bridged.
- Built to conform with CE European Certification EN1398.
- Working Range: 300mm above & below dock.
- Full toe guards.
- Three-piece front lip for narrow or off-centre trucks.
- High tensile lip. Protrudes 410mm from dock face.
- Three phase, 400V, 10A supply. Push button included.
- Two rubber bumpers included.
- Approx 1050kg, 3.7m³



TL3015-PS

Pit Steel for TL3015 Dock Leveller

- Galvanised. Bolt together and set in concrete by builder.

TL3015-DF

Dock Frame for TL3015 Dock Leveller

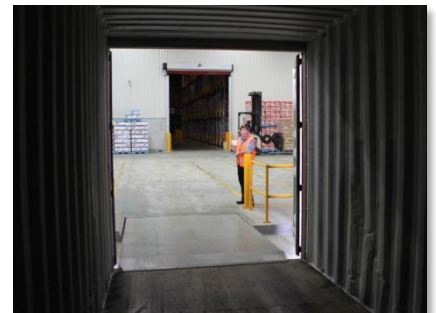
- Overall Size: 3000mm long x 3500mm wide.
- Dock Height: 1000mm - 1500mm.
- Weld assembly on site.
- Galvanised.



Need more information? Contact us today – NZ 0800-144-999, AU 1800-144-888 or visit www.tru-bilt.co.nz



TRU-LEVEL™ Projects by TRU-BILT Industries Ltd



Need more information? Contact us today – NZ 0800-144-999, AU 1800-144-888 or visit www.tru-bilt.co.nz

