

# TRU-LIFT™ Sectional Door Hardware

## Webpage

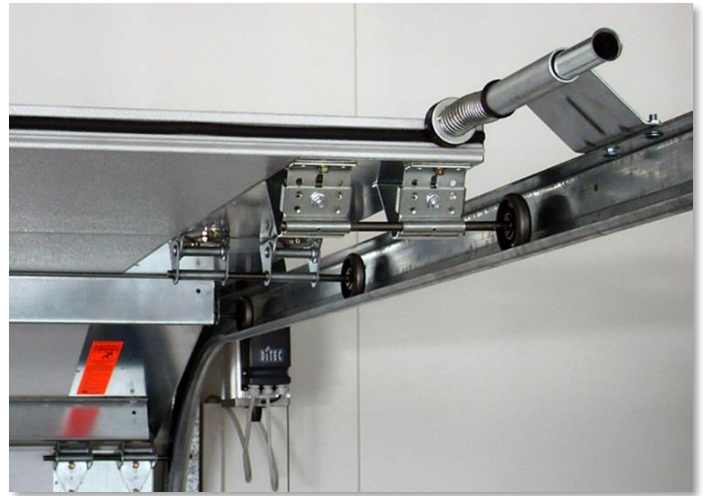
<http://www.tru-bilt.co.nz/tru-door/#tru-lift>

## Product Information

TRU-LIFT™ sectional door hardware is designed for a wide range of commercial and industrial door types.

When durability, reliability and economy are top priorities, apply TRU-LIFT™ hardware to your existing doors and take advantage of our top-quality materials. We offer a selection of tracks, springs and cable drums for standard lift, high lift and vertical lift doors, and can customise your entranceways according to your specific requirements.

Excellent field service and our optional TRU-CARE™ maintenance program will contribute to an extended door life, low maintenance costs and maximum productivity.



---

11000 (180)	400-8 SL - Standard Lift Cable Drum - Pair - Max. door height, 2438mm - Max. door weight, 240 kg - Shaft diameter, 25.4mm - Max. cable diameter, 3.2mm - Drum size, 123mmØ, 45mmW - Cable length: Floor to shaft centre + 200mm
----------------	---

---

11011 (181)	400-12 SL - Standard Lift Cable Drum - Pair - Max. door height, 3680mm - Max. door weight, 341 kg - Diameter shaft, 25.4mm - Max. cable diameter, 4mm - Drum size, 123mmØ, 78mmW - Cable length: Floor to shaft centre + 200mm
----------------	--

---

11002 (183)	5250-18 SL -Standard Lift Cable Drum - Pair - Max. door height, 5500mm - Max. door weight, 454 kg - Diameter shaft, 25.4mm - Max. cable diameter, 5mm - Drum size, 155mmØ, 98mmW - Cable length: Floor to shaft centre + 255mm
----------------	--

---

11003 (185)	800-32 SL -Standard Lift Cable Drum - Pair - Max. door height, 9780mm - Max. door weight, 890 kg - Diameter shaft, 25.4mm - Max. cable diameter, 6mm - Drum size, 230mmØ, 142mmW - Cable length: Floor to shaft centre + 355mm
----------------	--

---



Need more information? Contact us today – NZ 0800-144-999, AU 1800-144-888 or visit [www.tru-bilt.co.nz](http://www.tru-bilt.co.nz)



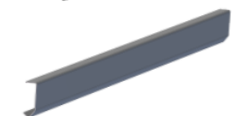
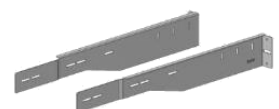
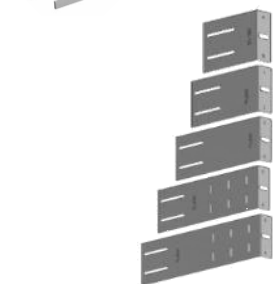
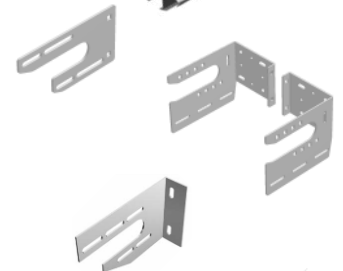
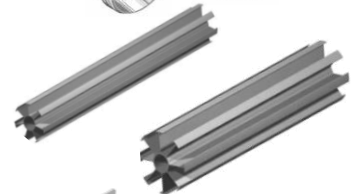
11006 (191)	5250-54 HL - High Lift Cable Drum - Pair - Max. highlift, HL= up to 1372mm - Max. door height, HL + 4572mm - Max. door weight, 455 kg - Diameter shaft, 25.4mm - Max. cable diameter, 5mm - Drum size, 182mmØ, 92mmW - Cable length: Floor to shaft centre + 1675mm - HL
11007 (192)	5750-120 HL - High Lift Cable Drum - Pair - Max. highlift, HL = up to 3048mm - Max. door height, HL + 3658mm - Max. door weight, 455 kg - Diameter shaft, 25.4mm - Max. cable diameter, 5mm - Drum size, 231mmØ, 94mmW - Cable length: Floor to shaft centre + 3375mm - HL
11009 (200)	850-11 VL - Vertical Lift Cable Drum - Pair - Max. door height, 3378mm - Max. door weight, 385 kg - Diameter shaft, 25.4mm - Max. cable diameter, 5mm - Drum size, 218mmØ, 85mmW - Cable length: Floor to shaft centre + 3480mm - DOH
11010 (201)	1100-18 VL -Vertical Lift Cable Drum - Pair - Max. door height, 5512mm - Max. door weight, 450 kg - Diameter shaft, 25.4mm - Max. cable diameter, 5mm - Drum size, 271mmØ, 108mmW - Cable length: Floor to shaft centre + 5865mm - DOH
295	Cable Pair, 4x19,4mm Galv, Fibre Core - Pair cost plus total amount of cable.
25516-3.6	Torsion Shaft - 25.4mmØ @ 3.6m, Zinc Plated
25048	Key steel - ¼" x ¼" x 100mm
25025M-01	Locking ring - 1" ID with grub screw
280	1" Torsion Coupling - Heavy Duty - Adjustable, 25.4mmØ I.D.
25034-1	1" Torsion Coupling - Light Duty - Adjustable, 25.4mmØ I.D.
210	Flat End Bearing Plate
226	Centre Bearing Support - 111mm offset



Need more information? Contact us today – NZ 0800-144-999, AU 1800-144-888 or visit [www.tru-bilt.co.nz](http://www.tru-bilt.co.nz)



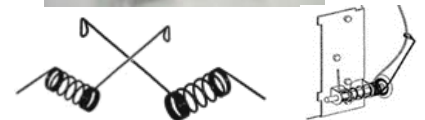
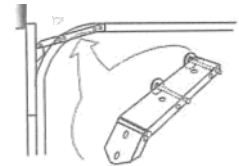
13002	Flanged End Bearing Plate Pair - 111mm offset, 8g/4mm
13026	1" Steel Bearing - 25.4mmØ I.D.
UCFL205-16(12MM)	Bearing & Housing - 1" ID, heavy duty cast housing
111	3-¾" Torsion Spring Assembly - Complete Spring order sheet
713	Spring Repair block - pair - Assemble as shown
12001	3-¾" Spring End Plug Set - Universal (cone and winding)
12005	6" Spring End Plug Set - LH or RH (cone and winding)
35082M	3-¾" Spring filler,3.0m (cut 200mm less than spring length)
35083M	6" Spring filler,3.0m (cut 200mm less than spring length)
13025	Universal Spring Anchor - Suits 3-¾" - 6" I.D. springs
CD150	Cable Drum Bracket Pair - 150mm wide x 225mm deep
SA225	Spring Anchor bracket - Bolts to CD150
TL140	Track Bracket- 140mm,4mm thick, Galvanised
TL260	Track Bracket- 260mm,3mm thick, Galvanised
TL340	Track Bracket- 340mm,3mm thick, Galvanised
TL420	Track Bracket- 420mm,3mm thick, Galvanised
TL500	Track Bracket- 500mm,3mm thick, Galvanised
TL900	Track Curve Bracket - Pair - 900mm, strengthened
TL080	80mm Track - Galvanised, No Holes,1.6mm thick
TL381	Alloy Curve - 381mm Radius, fits TL080 track



Need more information? Contact us today – NZ 0800-144-999, AU 1800-144-888 or visit [www.tru-bilt.co.nz](http://www.tru-bilt.co.nz)



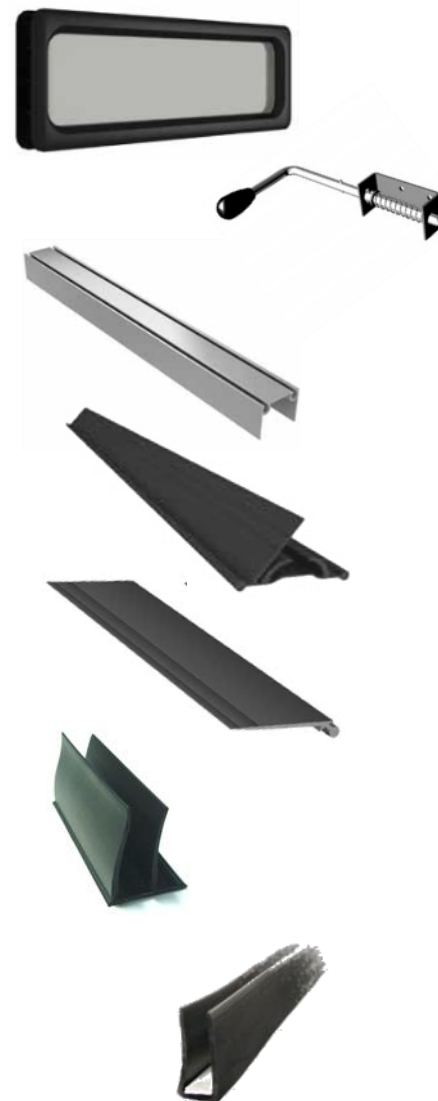
24601-10	Perforated angle - 32 x 32 x 2mm @ 3050mm long
24601	Perforated angle - 32 x 32 x 2mm @ 610mm long
M8 X 16 CB	M8 x 16mm Coach Bolt - with flange nut, bag of 75
14GTS	Gold Tek Screw - 14g, bag of 70, Sheet Metal type
25008	Top Wheel Bracket - Adjustable, 13g/2mm
256	Quick Close Fixture Pair - Reduces headroom measurement by up to 65mm.
25234 - 2	Double Side Hinge - Adjustable, 12g/2.5mm
25233	Internal Hinge - 12g/2.5mm
BB250-V2	Bottom Roller Bracket Pair - To suit 80mm Track
364	Broken Cable Safety Device- pair ( for 3" track) - Replaces bottom roller bracket & prevents the door from free falling if the cables break. - Recommended for large or heavy doors.
412	Cable Keepers - Prevents cable jumping off drum. - Installs over shaft on bottom roller.
72x248	Heavy Duty Roller ( for 3" track ) - 72mmØ Nylon wheel, Sealed bearing - 220mm Zinc plated shaft, 248mm overall - 11mmØ axle
DH00RVP	Roller Spacers - 4 piece set - Inside Ø 12.4mm - Lengths, 1 @ 20mm, 1 @ 10mm, 1 @ 7.5mm, 1 @ 5mm - Plastic
25026	Door Bumper Set (1 pair) - For use with jack shaft motors - 375mm overall, 150mm compression - 50mm diameter rubber bumper
25041	Door Bumper Set- Long (1 pair) - For use with jack shaft motors - 685mm overall, 300mm compression - 50mm diameter rubber bumper



Need more information? Contact us today – NZ 0800-144-999, AU 1800-144-888 or visit [www.tru-bilt.co.nz](http://www.tru-bilt.co.nz)



85602-SO	Vision Panel - Supply Only - Double Glazed Acrylic for minimal thermal loss/gain - ABS plastic frame for increased impact resistance - Size: 607mmW x 202mmH - See through size: 540mmW x 135mmH
25135	Door Catch - 12.7mm Pin, 50mm Stroke
80041	Seal Retainer, Anodised Aluminium - Fits 40mm door panel - 33mm High - up to 5.7m (3m max for safe freighting)
80044	Bottom Weather Seal - Use with 80041 Seal Retainer
80028	Top Flap Seal - Use with 80041 Seal Retainer - 65mm wide
45908	Breaker Seal - Rigid backing @ 35mm wide - 5.0m length - 38mm long legs
PPP910	Rubber U-gasket - door opening seal (minimum 5.0m)
UA1165	Retainer Bar - 10x2.3mm alloy, 5.0m cut into 1.0m pieces



	TRU-THERM™ Series II Replacement Panels - No Hardware, 500mm high, ribbed both sides
TT.RP.200	2100mm long, standard finish
TT.RP.275	2850mm long, standard finish
TT.RP.320	3300mm long, standard finish
TT.RP.410	4200mm long, standard finish
TT.RP.560	5700mm long, standard finish
80022L	Panel End Cap - Left hand (from inside)
80022R	Panel End Cap - Right hand (from inside)



Need more information? Contact us today – NZ 0800-144-999, AU 1800-144-888 or visit [www.tru-bilt.co.nz](http://www.tru-bilt.co.nz)

